

SINCE 1903  
*Forsyth*  
shirtmaker chemisier

2024



THE JOHN FORSYTH SHIRT COMPANY INC.



When John Forsyth started making shirts in the small town of Kitchener, Ontario, Canada, in 1903, he created a tradition of quality and craftsmanship marked by his personal guarantee. After over 100 years, Forsyth is still Canada's premier fine shirt maker.

To this day, we remain faithful to the time honored practices that go into making shirts of unparalleled quality and caring workmanship. From expertly tailored dress shirts to hard working performance-driven wovens, at John Forsyth we bring you exactly what you need for today's corporate and casual work environments.

NO ONE EVER REGRETTED  
BUYING QUALITY



*Forsyth*

**SMART STYLE**  
Fashionable & Functional

TABLE OF CONTENTS

Classic Oxford Shirts.....	4
Striped Oxford Shirts.....	6
Deluxe Pinpoint Oxford.....	7
Houndstooth Oxford Shirts.....	8
Yarn Dye Mini Check.....	9
Royal Oxford Shirts.....	10
Size charts domestic.....	11
Freedom Shirts.....	12
Herringbone Shirts.....	14
Stretch Twill.....	15
Stretch Solids.....	16
Stretch Checks.....	17

(FRB)

(CHR)

# CLASSIC OXFORDS

*Expertly tailored  
and easy care*

(NBL)

## Wrinkle-Resistant Classic Oxford

- 60% Cotton/40% polyester oxford with wrinkle-resistant finish
- seven-button top set placket • button-down collar • matte pearl buttons • left chest patch pocket on men's style • overlock construction • tailored two-button adjustable cuffs and sleeve placket on long sleeve style • standard back yoke shaped shirttail hem • available in long and short sleeves for men and women
- 1" top stitch hemmed cuffs on short sleeve styles • easy care machine wash and dry • 4.4 oz. • made in Canada

Colours: (NBL) Blue  
(NWT) White (Men's only)

(FRB) French Blue  
(CHR) Charcoal





Made in Canada

While quantities last

Two Pocket Classic Oxford Dress\*

Style #	Description	Men's or Ladies' Sizes
C100T2P	Men's Tall Short Sleeve Two-Pocket Classic Oxford in French Blue (FRB)	15.5 – 18.5"
C1012P	Men's Long Sleeve Two-Pocket Classic Oxford in French Blue (FRB), 33" / 35" / 37" Sleeve	14 – 21" ^
C1022P	Ladies' Short Sleeve Two-Pocket Classic Oxford in French Blue (FRB)	XS – 2XL
C1032P	Ladies' Long Sleeve Two-Pocket Classic Oxford in French Blue (FRB)	XS – 2XL

Style #	Description	Sizes
C100A	Men's Short Sleeve Classic Oxford Dress	S – 5XL
C101A	Men's Long Sleeve Classic Oxford Dress	S – 5XL
C102A	Ladies' Short Sleeve Classic Oxford Dress	XS – 2XL
C103A	Ladies' Long Sleeve Classic Oxford Dress	XS – 2XL

Transition will be made from numerical sizing (14 – 21) in our solid oxfords to alpha sizing (eg. XS – XL). Numerical inventory will be sold until depleted. Size spec for both Men's and Ladies' has been updated to a more modern fit. Both specs will be trimmed in the waist and hip. Please see fit charts on page 11 of catalogue.

^ 33" Sleeve Available in 14½–18½" half sizes only, 35" Sleeve Available in 15½–18½" half sizes only, 37" Sleeve Available in 15½–21" half sizes only.

\*Styles listed above will be discontinued and sold until depleted.

(GRY)

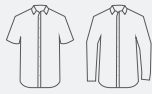
(BLU)



### Striped Classic Oxford

- 60% Cotton / 40% polyester oxford with wrinkle-resistant finish
- seven-button top-set front placket • button-down collar • matte pearl buttons • left chest patch pocket on men's style • set-in sleeves • overlock construction • ladies' features back yoke with box pleat • shaped shirt tail hem • tailored two-button adjustable cuffs and sleeve plackets on long sleeve styles • 1" top stitch hemmed cuffs on short sleeve styles • easy care machine wash and dry • 4.4 oz. • made in Canada

THE BENEFITS! >

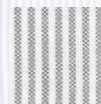
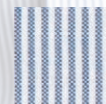


While quantities last

Style #	Description	Men's or Ladies' Sizes
C114	Ladies' Short Sleeve Classic Striped Oxford	XS - 2XL
C115	Ladies' Long Sleeve Classic Striped Oxford	XS - 2XL
Style #	Description	Sizes
C112A	Men's Short Sleeve Classic Striped Oxford	S - 5XL
C113A	Men's Long Short Sleeve Classic Striped Oxford	S - 5XL

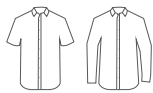
Transition will be made from multiple sleeve lengths in men's long sleeve to a spec with graduated sleeve and body length based on size. The spec will also be updated where both hip and waist measurement will be trimmed. Please see fit charts for Canadian made shirts on page 11 of catalogue. Inventory with multiple sleeve lengths will be sold until depleted.

Colours: (BLU) Blue (GRY) Grey

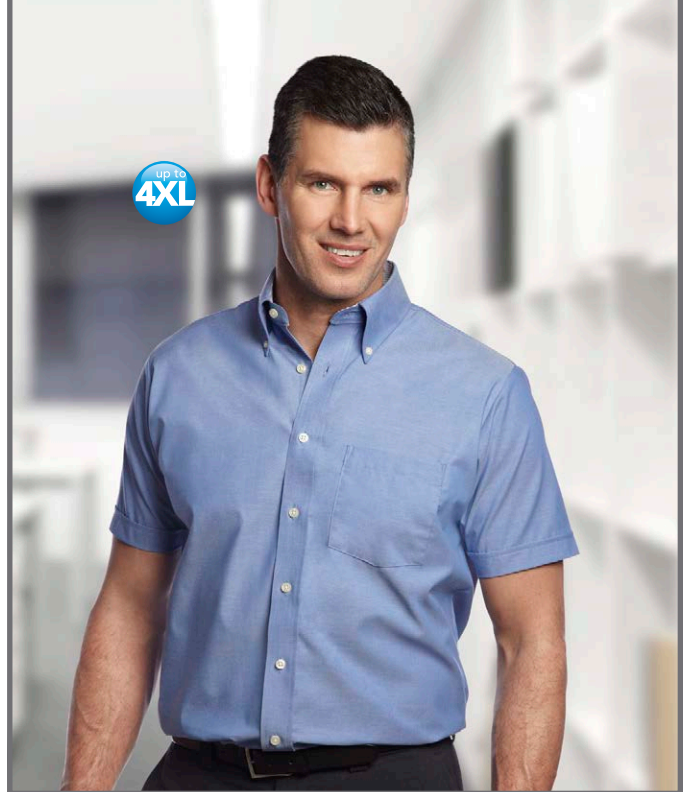


# deluxe pinpoint oxford

showcase your logo on our  
polished, wrinkle-resistant  
pinpoint oxford



**While quantities last**



## Deluxe Pinpoint Oxford

- 60% Cotton/40% polyester pinpoint oxford with wrinkle-resistant finish • contrast inner collar and cuff on long sleeve • contrast inner collar on short sleeve • seven-button top set placket • button-down collar • matte pearl buttons • left chest patch pocket on men's style • set-in, hemmed long sleeves • single-needle topstitching • tailored two-button adjustable cuffs and sleeve placket • back yoke with two tucks • shaped shirttail hem • available in long and short sleeve styles for men and women • 1" hemmed cuffs of short sleeve styles • easy care machine wash and dry • 4.2 oz • made in Canada

Colours: (FRB) French Blue



BODY

TRIM

THE BENEFITS! >



easy care



wrinkle resistant

Style #	Description	Sizes
C280	Men's Short Sleeve Deluxe Pinpoint Oxford	S - 4XL
C281	Men's Long Sleeve Deluxe Pinpoint Oxford	S - 4XL
C282	Ladies' Short Sleeve Deluxe Pinpoint Oxford	XS - 3XL
C283	Ladies' Long Sleeve Deluxe Pinpoint Oxford	XS - 3XL

(CRM)

(FRB)

(GRY)



Made in Canada

# RICH COLOUR

In a classic, comfortable wrinkle-resistant shirt

While quantities last

UP TO 4XL

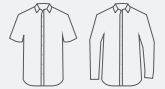
THE BENEFITS! >



easy care



wrinkle resistant



## Houndstooth Oxford

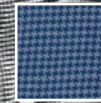
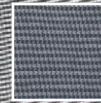
- 60% Cotton/40% polyester houndstooth check oxford with wrinkle-resistant finish
- seven-button top set placket
- button-down collar
- horn-tone buttons
- left chest patch pocket on men's style
- overlock construction
- tailored two-button adjustable cuffs and sleeve placket
- standard back yoke
- shaped shirttail hem
- available in long and short sleeve styles for men and women
- 1" top stitch hemmed cuffs on short sleeve styles
- easy care machine wash and dry
- 4.4 oz.
- made in Canada

Colours:

(CRM) Cream

(GRY) Grey

(FRB) French Blue



Transition will be made from multiple sleeve lengths in men's long sleeve to a spec with graduated sleeve and body length based on size. The spec will also be updated where both hip and waist measurement will be trimmed. Please see fit charts for Canadian made shirts on page 11 of catalogue. Inventory with multiple sleeve lengths will be sold until depleted.

Style #	Description	Men's or Ladies' Sizes
C118	Ladies' Short Sleeve Houndstooth Oxford (Cream only)	XS - 2XL
C119	Ladies' Long Sleeve Houndstooth Oxford (Cream only)	XS - 2XL

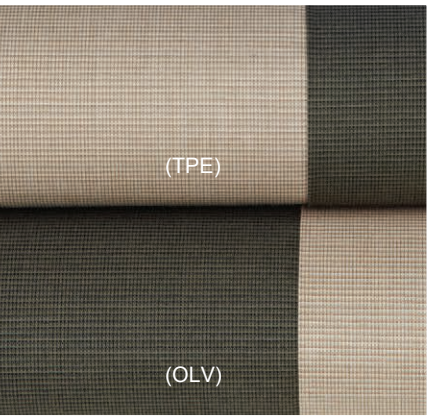
Style #	Description	Sizes
C116A	Men's Short Sleeve Houndstooth Oxford	S - 5XL
C117A	Men's Long Sleeve Houndstooth Oxford	S - 5XL



While quantities last

BODY

TRIM



up to 4XL



Made in Canada

**Mini Yarn Dye Check**

• 60% Cotton/40% polyester yarn dye broadcloth mini check with wrinkle-resistant finish • contrast inner collar and cuff on long sleeve • contrast inner collar on short sleeve • seven-button top set placket • button-down collar on men's style • soft tailored collar with top stitching on ladies' style • dyed-to-match buttons • left chest pocket on men's style • set-in, hemmed long sleeves • single needle top stitching • tailored two-button adjustable cuffs and sleeve placket • shoulder yoke with box pleat • shaped shirt tail hem • ladies' features square bottom hem • available in long and short sleeve styles for men and women • 1" top stitch hemmed cuffs on short sleeve styles • easy care machine wash and dry • 2.9 oz • made in Canada

Colours: (TPE) Taupe (OLV) Olive

THE BENEFITS! >



easy care



wrinkle resistant

Style #	Description	Men's or Ladies' Sizes
C260	Men's Short Sleeve Mini Check Yarn Dye	Sizes S – 4XL
C261	Men's Long Sleeve Mini Check Yarn Dye	Sizes S – 4XL
C262	Ladies' Short Sleeve Mini Check Yarn Dye	Sizes XS – 3XL
C263	Ladies' Long Sleeve Mini Check Yarn Dye	Sizes XS – 3XL





# ROYAL OXFORD

This finely detailed fabric has a refined look and stands up to wrinkles beautifully



*Luxurious 100's two-ply 100% cotton*  
 Our **Tailored Fit** shirts are contoured, yet not fully tapered, resulting in a made-to-measure feel.

## Royal Oxford

- 100's two-ply ringspun 100% combed cotton royal oxford with a wrinkle free Non Iron finish • deluxe construction features fully taped seams, pockets, yokes and armholes for a smooth wrinkle-free appearance that won't wash out • seven button top-set front placket • matte pearl buttons • left chest patch pocket • set-in sleeves • shaped shirt tail hem • tailored two-button adjustable cuffs and button through sleeve plackets • easy care machine wash and dry • **TAILORED FIT**

Colours: (WHT) White (CNF) Cornflower

Style #	Description	Men's Sizes
4700-414	Men's Spread Collar (WHT) 33" / 35" / 37" Sleeve	15 - 18" ^
4786-414	Men's Spread Collar (CNF) 33" / 35" / 37" Sleeve	15 - 18" ^

^ 33" Sleeve Available in 15-18, 35" Sleeve Available in 15.5-18, 37" Sleeve Available in 16.5-18.

THE BENEFITS! >



easy care



wrinkle free



taped seams

# New Domestic SIZE CHARTS

## Men's Chart

The men's chart below has been tapered in the waist and hip to give a more modern look.

In going from numerical sizing to alpha sizing we have graduated the spec where the bigger the size the longer the body length and sleeve length. We will not continue with 3 lengths of sleeves for each size.

		13 – 13½	14 – 14½	15 – 15½	16 – 16½	17 – 17½	18 – 18½	19 – 19½	20 – 20½	21 – 21½
REF	Measurement Point	XS	S	M	L	XL	2XL	3XL	4XL	5XL
A	Neck Circumference	14	15	16	17	18	19	20	21	22
B	Chest Circumference 1" below armhole	39	43	47	51	55	59	63	65	67
C	Waist Circumference	34	38	42	46 1/2	51	55 1/2	60	62 1/4	64 1/2
D	Hip Circumference	36	40	44	48	52 1/2	57	61 1/2	63 3/4	66
K	Long Sleeve Length	32 1/2	33 1/2	34 1/2	35 1/2	36 1/4	37	37 1/2	37 1/2	37 1/2
L	Short Sleeve Length	10	10 1/2	11	11 1/2	11 1/2	11 1/2	12	12	12
M	Centre Back Length	31	31	32	33	34	34 1/2	35	35	35

## Women's Chart

The women's chart below has been tapered in the waist and hip to give a more modern look.

REF	Measurement Point	XS	S	M	L	XL	2XL	3XL
A	Neck Circumference	15	15 1/2	16	16 1/2	17	17 1/2	18
B	Chest Circumference 1" below armhole	37	39	41	44	47	50	53
C	Waist Circumference 16" down from HSP	33 1/2	35 1/2	37 1/2	40 1/2	43 1/2	46 1/2	49 1/2
D	Sweep Circumference	39	41	43	46	49	52	55
K	Long Sleeve Length from CB neck to end of cuff	31 1/4	31 3/4	32 1/4	32 3/4	33 1/4	33 3/4	34 1/4
L	Short Sleeve Length from CB neck to end of cuff	15	15 1/2	16	16 1/2	17	17 1/2	18
M	Cb Length from back neck seam to hem	24 1/2	25	25 1/2	26 1/4	27	27 3/4	29 1/4
M	Front Length from high shoulder point to hem	25 1/2	26	26 1/2	27 1/4	28	28 3/4	30 1/4

# WRINKLE-FREE FROM START TO FINISH

*Luxurious 80's two-ply 100% cotton* combines with a wrinkle free Non Iron finish and quality taped seam construction to give you true freedom from wrinkles.

Style #	Description	Men's Sizes
1514UP	Men's Spread Collar Trimmed Fit White	14.5" - 19"*
1515UP	Men's Spread Collar Trimmed Fit Blue	14.5" - 19"*

\* 33" Sleeve Available in 14.5-17.5"  
 35" Sleeve Available in 15-18.5"  
 37" Sleeve Available in 17-19"



**Trimmed Fit**



Men's Point Collar

(WHT)

(FRB)

(LBL)

AND THAT'S JUST PART OF THE BEAUTY!

*Quality Taped Seam Construction*

THE BENEFITS! >



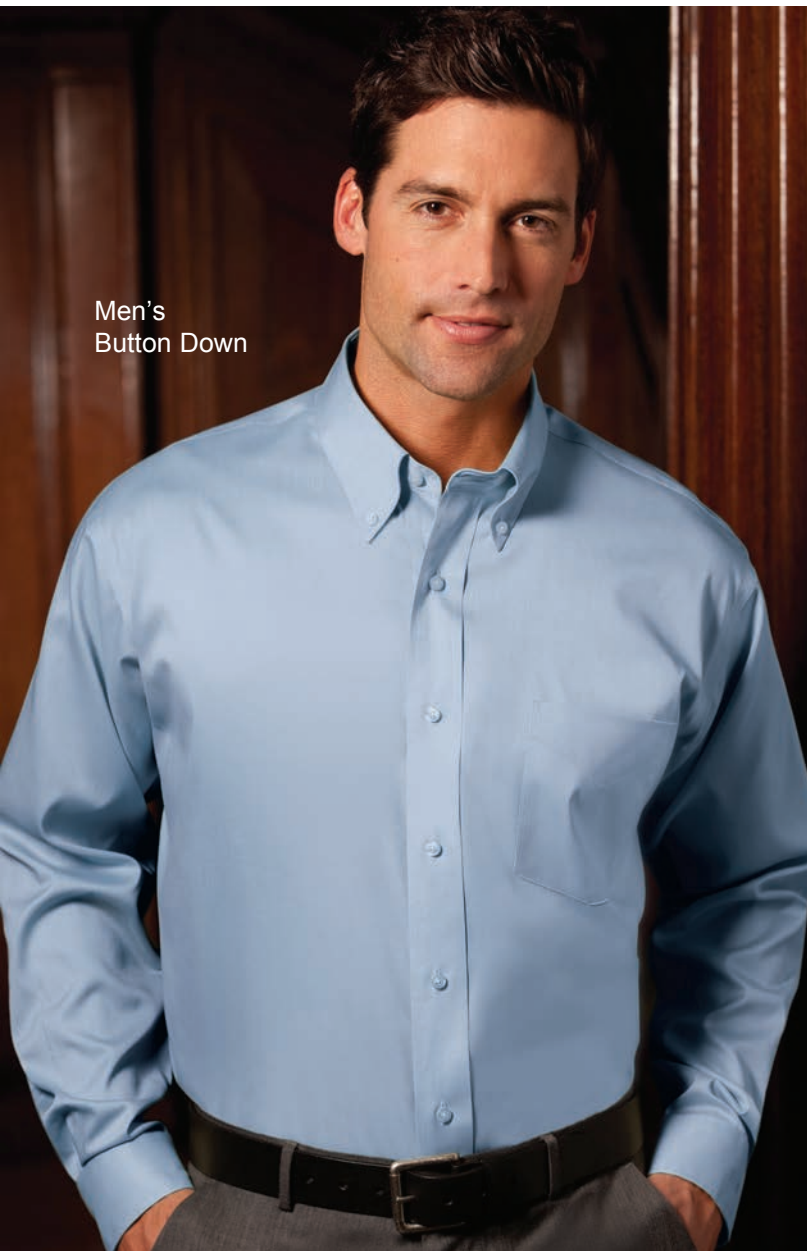
easy care



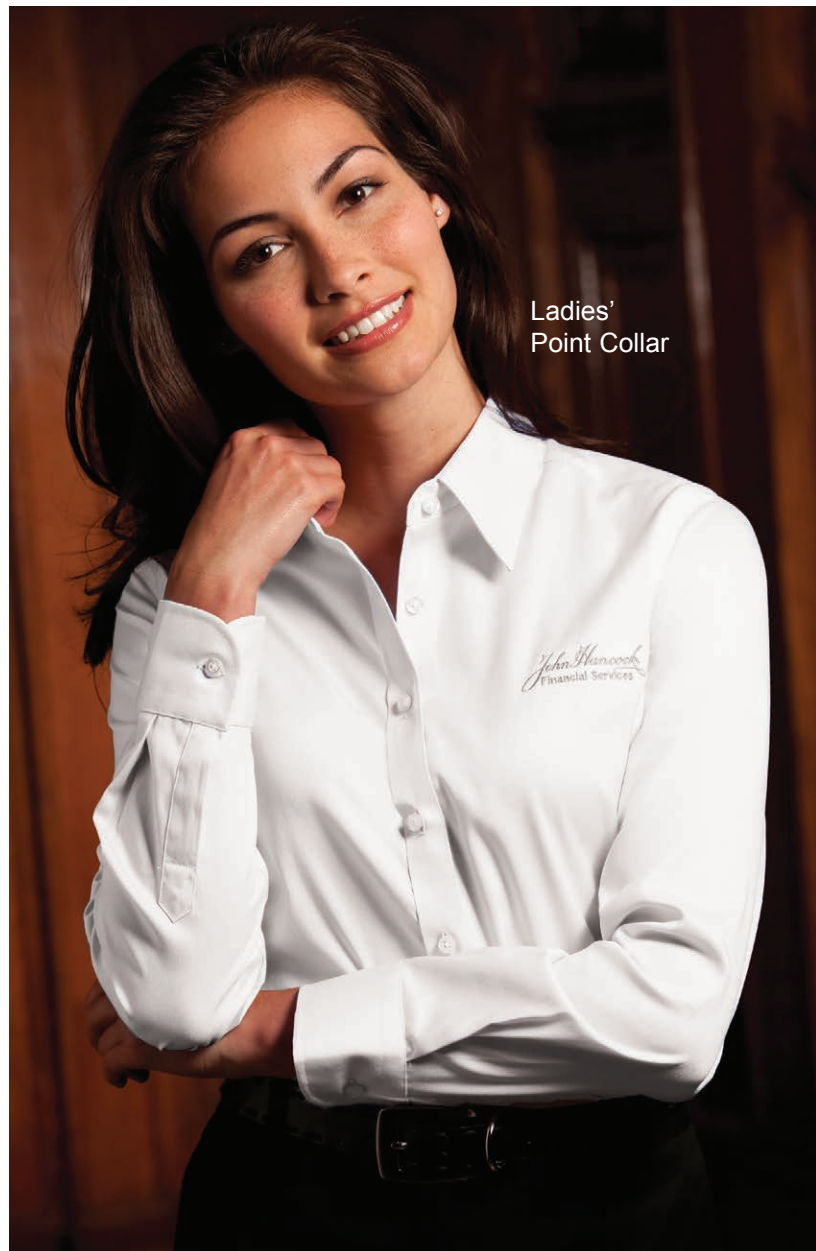
wrinkle free



taped seams



Men's  
Button Down



Ladies'  
Point Collar

## The Freedom Shirt – Full Cut Worry-Free Executive Pinpoint Oxfords

- 100% 80's two-ply ringspun combed cotton with a wrinkle free Non Iron finish • deluxe construction features fully-taped seams, pockets, yokes and armholes for a smooth, wrinkle-free appearance that won't wash out • seven-button top set placket • matte pearl buttons • left chest patch pocket on men's style • set-in, hemmed long sleeves • tailored two-button adjustable cuffs and button-through sleeve placket • split back yoke with box pleat • shaped shirttail hem • easy care machine wash and dry • initial dryer process will activate the wrinkle-free finish • available in long sleeve button-down or point collar for men, long sleeve point collar for women • 3.9 oz. • Ladies buttons dyed to match

Colours: (WHT) White (FRB) French Blue  
(LBL) Light Blue



Style #	Description	Men's or Ladies' Sizes
1514-111	Men's Point Collar (WHT) 33" / 35" / 37" Sleeve	14.5 – 21" ^
1515-111	Men's Point Collar (LBL) 33" / 35" / 37" Sleeve	15 – 21" ^
1644-111	Men's Point Collar (FRB) 33" / 35" / 37" Sleeve	15 – 21" ^
C128	Ladies' Point Collar (WHT), (LBL), (FRB)	XS – 2XL
1514-211	Men's Button Down Collar (WHT) 33" / 35" / 37" Sleeve	15 – 21" ^
1515-211	Men's Button Down Collar (LBL) 33" / 35" / 37" Sleeve	15 – 21" ^
1644-211	Men's Button Down Collar (FRB) 33" / 35" / 37" Sleeve	15 – 21" ^

^ 33" sleeve available in 14.5–17.5"  
35" sleeve available in 15.5–18.5"  
37" sleeve available in 15.5–21"

# The Freedom Shirt™

## NON IRON



# 100% COTTON HERRINGBONE

**While quantities last**

### 80'S 2-Ply

- 100% 80's two-ply ringspun combed cotton with a wrinkle free Non Iron finish • deluxe construction features all seams and stress points fully-fused and taped for a clean, crisp appearance • double-pleated cuff for comfort and ease of wear • single-needle armhole and double-needle side seams for strength and smooth appearance • cross-stitched buttons for durability • **TAILORED FIT**

Style #	Description	Men's Sizes
7837-314	Men's Herringbone White 33" / 35" / 37" Sleeve	15" - 18" <sup>^</sup>

<sup>^</sup> 33" Sleeve Available in 15-17  
35" Sleeve Available in 15.5-18.5  
37" Sleeve Available in 16.5"-18.5"



THE BENEFITS! >





(WHT)

(BLU)

THE BENEFITS! >



easy care



wrinkle free



taped seams

# STRETCH TWILL

## 97% Cotton 3% Spandex

- 97% Cotton 3% Spandex Stretch Twill • 80's two-ply cotton • Non Iron modern fit • Spread collar • Deluxe construction features all seams and stress points fully fused • Double pleated cuff for ease of wear • Single needle armhole and double needle side seams for strength and smooth appearance • Cross stitched buttons for durability • **MODERN FIT**

Colours: (WHT) White (BLU) Blue



Style #	Description	Men's Sizes
8704-514	Men's Long sleeve (WHT) 33" / 35" / 37" Sleeve	15" - 18" <sup>A</sup>
8705-514	Men's Long sleeve (BLU) 33" / 35" / 37" Sleeve	15" - 18" <sup>A</sup>

<sup>A</sup> 33" Sleeve Available in 15-17  
35" Sleeve Available in 15.5-18.5  
37" Sleeve Available in 16.5-18.5"



# STRETCH SOLID

93% Polyester 7% Spandex

THE BENEFITS! >



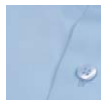
easy care



## Stretch Solid

- 93% Polyester 7% Spandex Stretch Solid • Spread collar • 7 dyed to match button front • No pocket • Two button adjustable cuff with sleeve plaque • Tail bottom. Machine wash and dry • **MODERN FIT**

Colours: (NVY) Navy (CHR) Charcoal (SKY) Sky



Style #	Description	Men's Sizes
14019	Men's Long sleeve Navy Stretch	S - 3XL
14020	Men's Long sleeve Sky Stretch	S - 3XL
14021	Men's Long Sleeve Charcoal Stretch	S - 3XL



# CHECK STRETCH

48% Polyester 41% Recycle Polyester 11% Spandex

(CHR)

(BLU)



Contrast inside collar  
and cuff

THE BENEFITS! >



## Check Stretch

• 48% Polyester 41% Recycle Polyester 11% Spandex • Spread collar • 7 pearlized button front • No pocket • Two button adjustable cuff with sleeve plaquet • Tail bottom • Machine wash and dry • Mesh contrast yoke • Contrast inside collar and cuff • **MODERN FIT**

Style #	Description	Men's Sizes
14022	Men's Long sleeve Blue Check Stretch	S - 3XL
14023	Men's Long sleeve Charcoal Check Stretch	S - 3XL

Colours: (BLU) Blue (CHR) Charcoal





SINCE 1903  
*Forsyth*  
shirtmaker chemisier



THE JOHN FORSYTH SHIRT COMPANY INC.  
[www.careerapparel.ca](http://www.careerapparel.ca)

© 2024 The John Forsyth Shirt Company Inc. All property rights reserved. Forsyth® is a registered mark of The John Forsyth Shirt Company Inc. All other brands and logos shown throughout this catalogue are trademarks, service marks and/or registered marks of their respective owners. All products are offered subject to availability and prices are subject to change without notice. The John Forsyth Shirt Company Inc., will not be responsible for typographical or printing errors contained in this catalogue.

# 2024 Forsyth® Price List

*Forsyth*

PAGE	STYLE	DESCRIPTION	PRICE (A)	
5	C100T2P	Men's Short Sleeve Tall Two-Pocket Classic Oxford French Blue	\$52.00	*
5	C1012P	Men's Long Sleeve Two-Pocket Classic Oxford French Blue	\$53.00	*
5	C1022P	Ladies' Short Sleeve Two-Pocket Classic Oxford French Blue	\$50.00	
5	C1032P	Ladies' Long Sleeve Two-Pocket Classic Oxford French Blue	\$53.00	
5	C100A	Men's Short Sleeve Classic Oxford	\$53.00	*
5	C101A	Men's Long Sleeve Classic Oxford Dress	\$60.00	*
5	C102A	Ladies' Short Sleeve Oxford	\$53.00	
5	C103A	Ladies' Long Sleeve Oxford	\$60.00	
6	C114	Ladies' Short Sleeve Classic Striped Oxford	\$50.00	
6	C115	Ladies' Long Sleeve Classic Striped Oxford	\$53.00	
6	C112A	Men's Short Sleeve Classic Striped Oxford	\$55.00	*
6	C113A	Men's Long Sleeve Classic Striped Oxford	\$62.00	*
7	C280	Men's Short Sleeve Deluxe Pinpoint Oxford	\$49.00	*
7	C281	Men's Long Sleeve Deluxe Pinpoint Oxford	\$52.00	*
7	C282	Ladies' Short Sleeve Deluxe Pinpoint Oxford	\$49.00	
7	C283	Ladies' Long Sleeve Deluxe Pinpoint Oxford	\$52.00	
8	C118	Ladies' Short Sleeve Houndstooth Oxford	\$53.00	
8	C119	Ladies' Long Sleeve Houndstooth Oxford	\$57.00	
8	C116A	Men's Short Sleeve Houndstooth Oxford	\$57.00	*
8	C117A	Men's Long Sleeve Houndstooth Oxford	\$64.00	*
9	C260	Men's Short Sleeve Mini Check Yarn Dye	\$49.00	*
9	C261	Men's Long Sleeve Mini Check Yarn Dye	\$52.00	*
9	C262	Ladies' Short Sleeve Mini Check Yarn Dye	\$49.00	
9	C263	Ladies' Long Sleeve Mini Check Yarn Dye	\$52.00	
10	4700-414	Men's Royal Oxford Spread Collar White	\$84.00	
10	4786-414	Men's Royal Oxford Spread Collar Cornflower	\$84.00	
14	1514UP	Men's Executive Pinpoint Oxford Point Collar White Trimmed Fit	\$80.00	
15	1514-111	Men's Executive Pinpoint Oxford Point Collar White	\$80.00	*
15	1514-211	Men's Executive Pinpoint Oxford Button Down Collar White	\$80.00	*
15	1515-111	Men's Executive Pinpoint Oxford Point Collar Blue	\$80.00	*
15	1515-211	Men's Executive Pinpoint Oxford Button Down Collar Blue	\$80.00	*
15	1644-111	Men's Executive Pinpoint Oxford Point Collar French Blue	\$80.00	*
15	1644-211	Men's Executive Pinpoint Oxford Button Down Collar French Blue	\$80.00	*
15	C128	Ladies' Executive Pinpoint Oxford Point Collar	\$80.00	

\*Forsyth Extended Size Information. For men's dress shirts sizes 19-21 add \$6.00 (A). For sizes 3XL and 4XL add \$6.00 (A).

[www.careerapparel.ca](http://www.careerapparel.ca)

# 2024 Forsyth® Price List

*Forsyth*

(cont'd)

PAGE	STYLE	DESCRIPTION	PRICE (A)
16	7837-314	Men's Herringbone White	\$84.00
17	8704-514	Men's Stretch Twill White	\$88.00
17	8705-514	Men's Stretch Twill Blue	\$88.00
18	14019	Men's Long Sleeve Navy Stretch Solid	\$46.00
18	14020	Men's Long Sleeve Sky Stretch Solid	\$46.00
18	14021	Men's Long Sleeve Charcoal Stretch Solid	\$46.00
19	14022	Men's Long Sleeve Blue Stretch Check	\$50.00
19	14023	Men's Long Sleeve Charcoal Stretch Check	\$50.00

\*Forsyth Extended Size Information. For men's dress shirts sizes 19–21 add \$6.00 (A). For sizes 3XL and 4XL add \$6.00 (A).

[www.careerapparel.ca](http://www.careerapparel.ca)

**Sizing:**

Please use the following sizing charts and measuring tips to help you order the correct size. **The measurements below are body measurements and not garment measurements.** Feel free to contact customer service if you have any questions.

Men's Sizes	Chest	Neck	Sleeve
XS	30 - 32	13 - 13 1/2	30 1/2 - 32
S	34 - 36	14 - 14 1/2	32 - 33
M	38 - 40	15 - 15 1/2	32 - 33
L	42 - 44	16 - 16 1/2	34 - 35
XL	46 - 48	17 - 17 1/2	34 - 35
XXL	50 - 52	18 - 18 1/2	36 - 37
3XL	54 - 56	19 - 19 1/2	36 - 37
4XL	58 - 60	20 - 20 1/2	36 - 37

Ladies' Sizes	Size	Bust	Waist	Hips
XS	0 - 2	33 - 34	29 1/2 - 30 1/2	35 - 36
S	4 - 6	35 - 36	31 1/2 - 32 1/2	37 - 38
M	8 - 10	37 - 38	33 1/2 - 34 1/2	39 - 40
L	12 - 14	39 - 41	35 1/2 - 37 1/2	41 - 43
XL	16 - 18	42 - 44	38 1/2 - 40 1/2	44 - 46
2XL	20 - 22	45 - 47	41 1/2 - 43 1/2	47 - 49
3XL	24 - 26	48 - 50	44 1/2 - 46 1/2	50 - 52

**Chest:**

Raise your arms slightly and measure around your body. Be sure to cross over your shoulder blades and the fullest part of your chest, keeping the tape parallel to the ground.

**Neck:**

Measure around the middle of your neck (at the Adam's apple), keeping one finger between your neck and the tape measure for a comfortable fit.

**Sleeve:**

Place your hand on your hip with your arm bent at a 90 degree angle. Measure from the middle of the back of your neck, across your shoulder and down your arm to your wrist.

**Bust:**

With arms relaxed at your sides, measure the fullest part of the bust, keeping the tape parallel to the ground.

**Waist:**

Measure around your waist where your pants usually fall. Keep one finger between the tape and waist.

**Hips:**

Stand with your heels together and measure around the fullest part of your hips, keeping the tape parallel to the ground.

**Colors:**

Forsyth knows how important accurate product color is to you and your customers. That's why we have an in-house product testing facility that maintains very strict color standards.

Please note: due to the nature of digital and film photography and printing, product color in this catalog may not be exact. Ordering a product sample will ensure verification of exact color shade.

### **Commitment to Customers**

1. Orders received before 12:00 p.m. EST will be shipped within two (2) business days on all credit approved orders and orders supplied with proper product information.
2. Sample orders received from new accounts will be shipped within 24 hours on approved credit. Samples will be billed at 25% off and are non-returnable. Please note there is 12 unit limit per account, per season, on sample orders.
3. Customers will be contacted within 24 hours with regard to problem orders or back orders. When placing your order, please provide your e-mail address as an alternate means of communication of problems.
4. Return Authorization Numbers will be mailed or Customers will be called within 48 hours (on all approved returns).

### **Customers Responsibilities**

1. Customers must supply all necessary style information to ensure no delays in shipping orders – you must include style number, color, proper size scale (i.e., 15 1/2 vs M – see size chart), and sleeve lengths, where applicable. If no sleeve length is specified, we reserve the right to send a 33” sleeve for sizes 14 to 16, and a 35” sleeve for sizes 16 1/2 and up.
2. Customers requesting complete shipments only, with no back orders, must clearly indicate this on the order, otherwise we reserve the right to split shipments and back order product.
3. Special instructions regarding shipping, drop ship to address, billing address or incentive pricing must be clearly indicated on orders placed. All orders will be shipped F.O.B. our warehouse via most cost-effective method unless otherwise specified.
4. Claims regarding short shipments of shipping errors must be made within ten (10) days of receiving the shipment.
5. All returns require a Return Authorization Number (RTA), which must be obtained through our Customer Service Department. Returns must be claimed within fifteen (15) days of receipt of shipment and may be assessed a 25% restocking charge.
6. It is the Customer’s responsibility to inspect all merchandise for correct color, style, quantity and size prior to embellishing or altering the product. We accept no responsibility for discrepancies on orders shipped to third parties.

### **Credit Policy**

1. Our credit terms are net 30 days – please pay accordingly to avoid delays in processing orders.
2. New accounts must complete and sign a Credit Information Form for processing. We accept VISA and MasterCard credit cards, for payment at time of shipping. Payment by credit card is not accepted after extending terms.
3. Interest is charged on all past due accounts.
4. Accounts that are over 60 days may be placed on collection, unless arrangements have been made and approved by the Credit Manager. Collection fees will be charged to the Customer’s account.
5. A \$25.00 service charge will be applied against an account for NSF cheques.

CREDIT INFORMATION

CANADIAN ACCOUNTS ONLY

THE JOHN FORSYTH SHIRT COMPANY INC

2645 SKYMARK AVENUE, UNIT 105, MISSISSAUGA, ONTARIO, L4W 4H2 PHONE (905)362-4040 FAX (905)362-4033

REGISTERED COMPANY NAME: \_\_\_\_\_

TRADE NAME / DOING BUSINESS AS: \_\_\_\_\_

ADDRESS: \_\_\_\_\_

CITY: \_\_\_\_\_ PROVINCE: \_\_\_\_\_ POSTAL CODE: \_\_\_\_\_

TELEPHONE #: (\_\_\_\_) \_\_\_\_\_ - \_\_\_\_\_ FAX #: (\_\_\_\_) \_\_\_\_\_ - \_\_\_\_\_

COMPANY START DATE: \_\_\_\_\_ COMPANY ESTIMATED ANNUAL SALES: \_\_\_\_\_

ACCOUNTS PAYABLE CONTACT: \_\_\_\_\_ EMAIL: \_\_\_\_\_

OWNERSHIP: (CHECK APPLICABLE BOX)

(1) SOLE PROPRIETORSHIP  (2) PARTNERSHIP  (3) CORPORATION

NAMES AND ADDRESSES OF OWNERS OR OFFICERS:

\_\_\_\_\_  
\_\_\_\_\_

PAYMENT BY CREDIT CARD OPTION: CHECK BOX TO INDICATE THAT YOU WANT TO PAY FOR ALL ORDERS BY CREDIT CARD AT TIME OF SHIPPING (VISA OR MASTERCARD). AN AUTHORIZATION FORM WILL BE SENT REQUESTING CREDIT CARD INFORMATION.

REFERENCES:

	COMPANY NAME	CITY	PHONE #
(1)	_____	_____	_____
(2)	_____	_____	_____
(3)	_____	_____	_____
(4)	_____	_____	_____

BANKING INFORMATION:

NAME OF BANK: \_\_\_\_\_

ADDRESS: \_\_\_\_\_

PHONE #: \_\_\_\_\_ FAX #: \_\_\_\_\_ CONTACT NAME: \_\_\_\_\_

ACCOUNT #: \_\_\_\_\_

I/WE HEREBY REPRESENT THAT I/WE ARE AUTHORIZED TO SUBMIT THE APPLICATION ON BEHALF OF THE CUSTOMER NAMED ABOVE, AND THAT THE INFORMATION PROVIDED FOR THE PURPOSE OF OBTAINING CREDIT IS WARRANTED TO BE TRUE. I/WE HEREBY AUTHORIZE THE JOHN FORSYTH SHIRT COMPANY INC TO INVESTIGATE THE REFERENCES LISTED PERTAINING TO MY/OUR CREDIT AND FINANCIAL RESPONSIBILITY. IT IS AGREED AND UNDERSTOOD THAT ALL NECESSARY COLLECTION AND LEGAL COSTS AND INTEREST AT 24% PER ANNUM MAY BE CHARGED TO MY ACCOUNT IN THE EVENT OF DEFAULT OR FAILURE TO PAY FOR GOODS RECEIVED AND/OR SERVICES RENDERED. I/WE FURTHER RESPESENT THAT THE CUSTOMER APPLYING FOR THE CREDIT HAS THE FINANCIAL ABILITY AND WILLINGNESS TO PAY FOR ALL INVOICES WITHIN ESTABLISHED TERMS. I/WE, THE UNDERSIGNED, AUTHORIZE THE JOHN FORSYTH SHIRT COMPANY INC TO OBTAIN AND /OR EXCHANGE BUSINESS AND/OR PERSONAL INFORMATION WITH CREDIT GRANTORS, CREDIT REPORTING AGENCIES AND/OR FINANCIAL INSTITUTIONS FOR THE PURPOSES OF ESTABLISHING OR VERIFYING MY/OUR FINANCIAL STANDING AND/OR THAT OF THE COMPANY.

REGISTERED NAME OF COMPANY

FORSYTH SALES REPRESENTATIVE

SIGNATURE OF OWNER OR OFFICER

DATE

NAME AND POSITION OF PERSON SIGNING

## RETURN AUTHORIZATION REQUEST FORM

All returns require a **RETURN AUTHORIZATION NUMBER (RA#)**, which must be obtained through our Customer Service Department using this form. **Returns must be claimed within fifteen (15) days of receipt** of shipment and may be assessed a 25% restocking fee.

It is the Customer's responsibility to inspect all merchandise for correct colour, style, quantity and size prior to embellishing or altering product. We accept no responsibility for discrepancies on orders shipped to third parties.

Returns will **NOT** be accepted without a Return Authorization Number issued by our Customer Service Department.

Once RA# has been issued by our Customer Service Department, please return all goods, including an authorized copy of this form and reference to your RA# to:

**THE JOHN FORSYTH SHIRT COMPANY INC  
2645 SKYMARK AVENUE  
MISSISSAUGA, ON L4W 4H2**

COMPANY NAME: \_\_\_\_\_ ACCOUNT#: \_\_\_\_\_

PO#: \_\_\_\_\_ INVOICE#: \_\_\_\_\_

CONTACT NAME: \_\_\_\_\_ TEL#: \_\_\_\_\_ FAX#: \_\_\_\_\_

STYLE: \_\_\_\_\_ QTY: \_\_\_\_\_

STYLE: \_\_\_\_\_ QTY: \_\_\_\_\_

STYLE: \_\_\_\_\_ QTY: \_\_\_\_\_

STYLE: \_\_\_\_\_ QTY: \_\_\_\_\_

STYLE: \_\_\_\_\_ QTY: \_\_\_\_\_

REASON FOR RETURN:

---

---

---

---

---

FOR INTERNAL OFFICE USE ONLY:

**RA#:** \_\_\_\_\_ **AUTHORIZED BY:** \_\_\_\_\_





# NOTES

